

Plastmo

U-Snap™

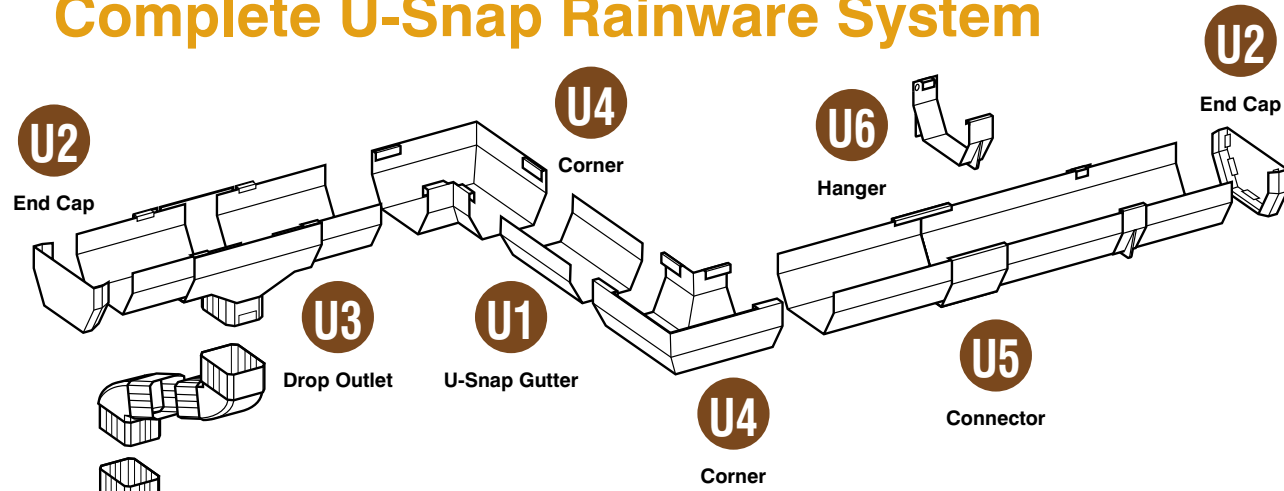


Vinyl Rainware System

U-Snap™

Vinyl Rainware System

Complete U-Snap Rainware System



HORIZONTAL COMPONENTS

Components	Parts	Description	Qty Req.
	U1 Gutter	10 ft. lengths. Gutter may be cut to fit any size. Divide the total lineal feet of the project by 10 to determine the number of gutter pieces required.	
	U2 End Cap	For capping the open end of a gutter. Also fits on drop outlet. Must be cemented (A1) to the end of the gutter.	
	U3 Drop Outlet for Downspout	Allows for free thermal expansion of gutter while providing outlet to downspout. One required for each downspout assembly. Do not cement. Two (2) A2 screws required.	
	U4 Corner	For outside or inside corner joining of gutter sections. Must be cemented (A1) to the end of the gutters.	
	U5 Connector	For joining two gutter sections. Must be cemented (A1) to the two sections of gutters.	
	U6 Hanger	Firmly supports gutter sections while allowing for free expansion. One required for every 24" of gutter. Do not cement. Two (2) A2 screws required.	
	K11 Wedge*	Used to adapt brackets and drop outlet to inward slanted fascia. Will compensate for roof pitches: 4/12 and 6/12. Do not cement. Must be used with gutter bracket.	

*SO - Special Order

Do it yourself • Durable • Easy to install

VERTICAL COMPONENTS

Components	Parts	Description	Qty Req.
	D1 Downspout	10 ft. lengths. May be cut to size for use between elbows. Generally one length required for each story. Do not cement.	
	D2 Elbow (75°)	Two are required for each downspout assembly to bring downspout from the fascia overhang to the wall. A third may be used at base of downspout. Do not cement.	
	D3 Downspout Bracket	For securing downspout to the wall. Use two for every length of downspout. Do not cement. Two (2) A2 screws required.	
	D4 Downspout Connector	To join two lengths of downspout. Also used for joining downspout to drop outlet where there is no overhang. Do not cement.	
	D5 Swing Up Outlet	Installed at the base of the Downspout to divert water from the building; swings up for mowing, etc. Do not cement.	

Each component is designed and manufactured for durability and ease of installation.

ACCESSORIES

Components	Parts	Description	Qty Req.
	A1 Cement (5 fl. oz.)	Use on surfaces to be permanently "welded". One tube required for every 100 ft. Use Plastmo cement only.	
	A2 Screws #10 x 1 3/4" 20/bag	For mounting brackets, drop outlet and expansion connector to building. 5/16" Hex and slot drive, plated.	

Each component is designed and manufactured for durability and ease of installation.



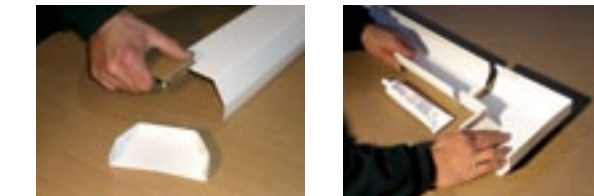
U-Snap™ manufactured by:
Vinyl Rainware System **Plastmo**
Engineering by Design

Snap Together - Do It Yourself
Durable - Easy to Install



STEP 1:

Install drop outlet (U3) at predetermined downspout location. Install a bracket (U6) at highest point on fascia board at farthest point from drop outlet. Always slope down to downspout location. Mark chalk line and position brackets every 24". Slope should be 1/4" per 10 ft. End cap (U2) may be attached directly to drop outlet if at end of a gutter run. If gutter continues around corner, position brackets at same height and no closer than 12" from corner.



STEP 2:

Lightly sand surfaces to receive cement with 100 grit paper. Surfaces should be clean and dry. Minimum temperature should be 32° F. Drying time of cement is approximately 30 seconds. Use Plastmo cement only. Install end caps while still on ground. Small guides will keep it in place while cement dries. For corners apply cement in zig-zag pattern from front to back.



STEP 3:

Install gutter section with attached corner (U4) and/or end cap (U2) onto brackets. Push rear edge of gutter up into bracket then snap front top of gutter over front tip.



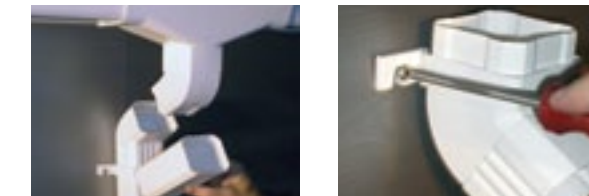
STEP 4:

Insert gutter 3 1/2" into the drop outlet for proper placement. **Note: Do not cement gutter to drop outlet.** Second side of corner can now be cemented to clean surface of gutter. Engage gutter by pushing it up the back edge of corner, then push front of gutter so that "Lock Rim" snaps into place.



STEP 5:

Join gutter sections at roof level. Apply cement on cleaned connectors (U5) from front to back. Hook connector onto rear edge of gutter, and then press connector onto front of gutter so "Lock Rim" snaps into place.



STEP 6:

Install elbow (D2) onto drop outlet. Measure downspout and cut to size between elbows. Install third elbow at bottom of downspout using downspout bracket (D3) as shown. Also install downspout bracket at top of downspout and at downspout connector (if necessary). **Note: Do not cement elbows or downspout.**



STEP 7:

Make sure all cemented fittings are at least 2" away from brackets.