

**Snap Together - Do-It Yourself**  
**Durable - Easy to Install**



**STEP 1:**  
Install drop outlet at predetermined downspout location. Install a hanger at highest point on fascia board at farthest point from drop outlet. Always slope down to downspout location. Mark chalk line and position hangers every 24" (610 mm). Slope should be 1/4" per 10 ft. (6 mm per 3 m). End cap may be attached directly to drop outlet if at end of a gutter run. If gutter continues around corner, position hangers at same height and no closer than 12" (305 mm) from corner.



**STEP 2:**  
Lightly sand surfaces to receive cement with 100 grit paper. Surfaces should be clean and dry. Minimum temperature should be 32° F (0° C). Drying time of cement is approximately 30 seconds. Use Plastmo cement only. Install end caps while still on ground. Small guides will keep it in place while cement dries. For corners apply cement in zig-zag pattern from front to back.



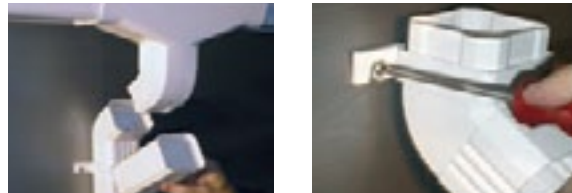
**STEP 3:**  
Install gutter section with attached corner and/or end cap onto hangers. Push rear edge of gutter up into hanger then snap front top of gutter over front tip of hanger.



**STEP 4:**  
See temperature lines inside the drop outlet for proper placement of gutter. **Note: Do not cement gutter to drop outlet.** Second side of corner can now be cemented to clean surface of gutter. Engage gutter by pushing it up the back edge of corner, then push front of gutter so that "Lock Rim" snaps into place.



**STEP 5:**  
Join gutter sections at roof level. Apply cement on cleaned connectors from front to back. Hook connector onto rear edge of gutter, then press connector onto front of gutter so "Lock Rim" snaps into place.



**STEP 6:**  
Install elbow onto drop outlet. Measure downspout and cut to size between elbows. Install third elbow at bottom of downspout using downspout bracket as shown. Also install downspout bracket at top of downspout and at downspout connector (if necessary). **Note: Do not cement elbows or downspout.**

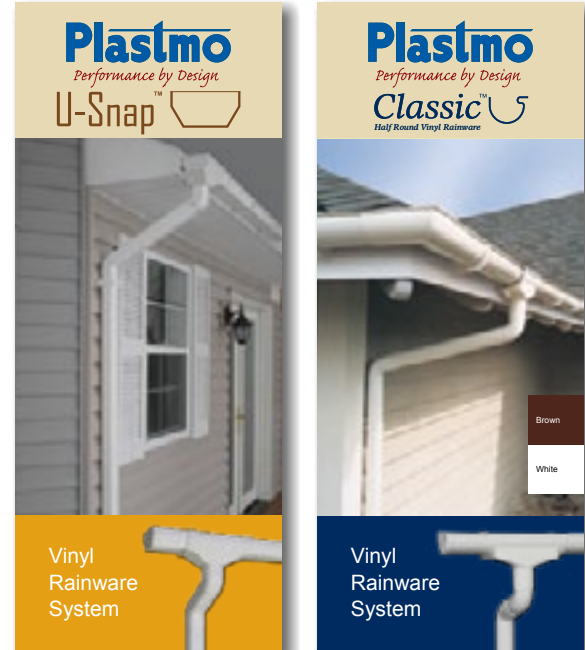


**STEP 7:**  
Make sure all cemented fittings are at least 2" (51 mm) away from hangers.

**STEP 8:**  
On particularly long runs you should install an expansion connector. Only needed when there is no downspout, therefore, no drop outlet, a corner at either end of gutter run and there is more than 25 ft. (7.6 m) of gutter between corners. Instructions included with unit.

Plastmo answers all your Rainware needs with an extensive line of vinyl rainware products manufactured following state-of-the-art methods.

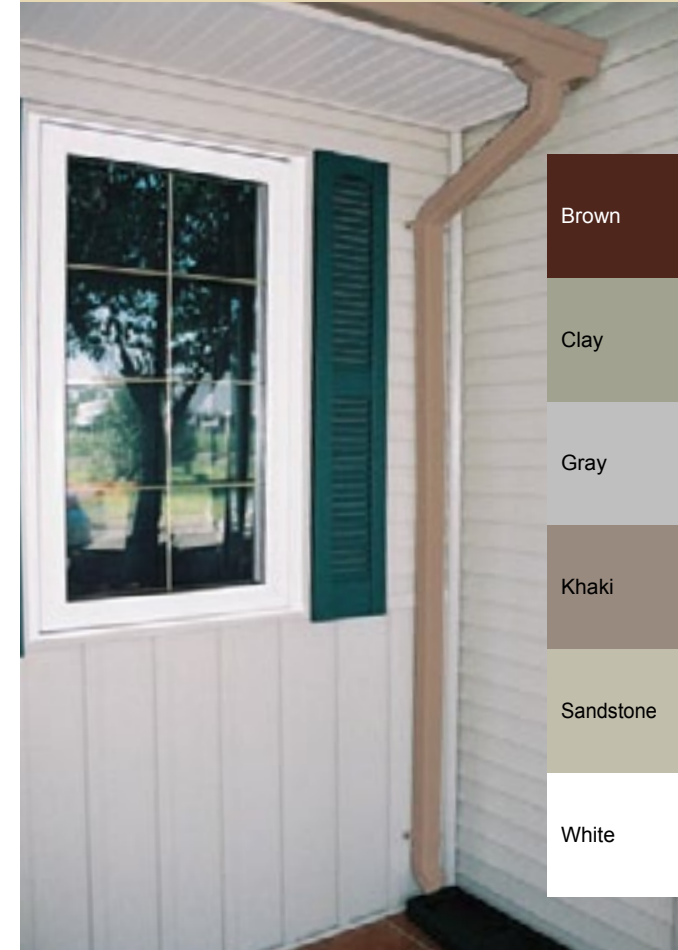
Built on more than 40 years of experience; you can count on the quality and durability of our products.



Plastmo follows rigorous quality control and testing, meeting and exceeding the most stringent industry and government standards, at all stages of manufacturing.

**Plastmo**

1-888-793-9462  
[www.plastmo.com/rainware](http://www.plastmo.com/rainware)



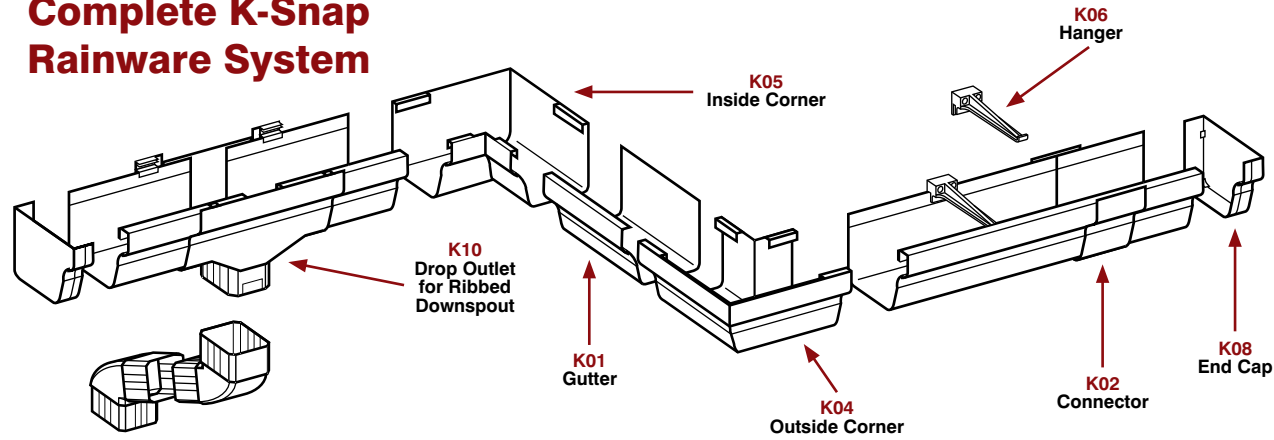
**Vinyl  
Rainware  
System**





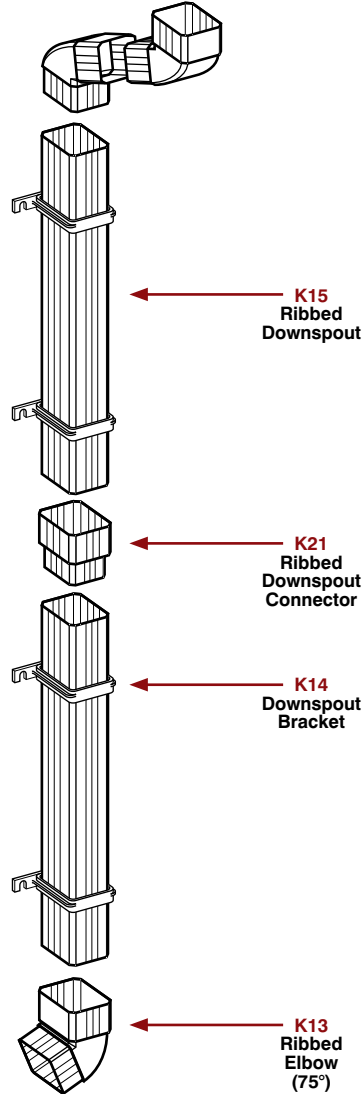
- Do it yourself
- Durable
- Easy to install

## Complete K-Snap Rainware System



Each component is designed and manufactured for durability and ease of installation.

**NOW AVAILABLE IN VARIOUS COLORS.**

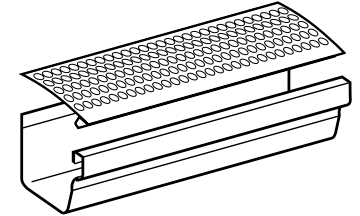


HORIZONTAL COMPONENTS			
Components	Parts	Description	Qty Req.
	K01 Gutter	10 ft. (3 m) lengths. May be cut to fit any size.	
	K02 Connector	For joining gutter sections.	
	K03 Expansion Connector	Must be used on any side where there is 25 ft. (7.66 m) or more between two corner components and no drop outlet. Allows for free expansion of gutter. <i>2 K31 screws required.</i>	
	K04 Outside Corner	For exterior corner joining of gutter sections.	
	K05 Inside Corner	For internal corner joining of gutter sections.	
	K06 Hanger	Firmly supports gutter sections while allowing for free expansion. One required for every 24" (61.5 cm) of gutter. <i>Do not cement. 2 K31 screws required.</i>	
	K08 End Cap Right/Left (2 per bag)	For capping open ends of gutter. Also fits on drop outlet.	

SQUARE VERTICAL COMPONENTS			
Components	Parts	Description	Qty Req.
	K10 Drop Outlet for Ribbed Downspout	Allows for free thermal expansion of gutter while providing outlet to downspout. One required for each downspout assembly. <i>Do not cement. 2 K31 screws required.</i>	
	K13 Ribbed Elbow (75°)	To bring downspout from the fascia overhang to the wall. Two are required for each downspout assembly. Third may be used at base of downspout. <i>Do not cement.</i>	
	K14 Downspout Bracket	For securing downspout to the wall. Use two for every length of downspout.	
	K15 Ribbed Downspout	10 ft. (3 m) lengths. May be cut to size for use between elbows. Generally one length required for each story. <i>Do not cement.</i>	
	K18 Ribbed Swing Up Outlet	Diverts water from building; swings up for mowing, etc.	
	K21 Ribbed Downspout Connector	To join two lengths of downspout. Also used for joining downspout to drop outlet where there is no overhang. <i>Do not cement.</i>	

## Snap Together Do-It Yourself

### Leaf Guard



The K-Snap Leaf Guard is the perfect complement to your rainware installation. It keeps leaves and large debris out of your gutters. Gutter not included.

### ACCESSORIES

Components	Parts	Description	Qty Req.
	P24 Cement	Use on surfaces to be permanently "welded". One tube is required for every 100 ft. (30.5 m). Use Plastro cement only. 5 fl. oz (150 ml).	
	K25 Leaf Guard	Keeps gutter free of leaves. 5 ft. (1.5 m) lengths.	
	K30 Wedge	For adapting hangers and drop outlet to inward slanted fascia. It will compensate for roof pitches: 4/12 (3/10) and 6/12 (5/10).	
	K31 Screws #10 x 1 3/4" (45 mm) 20/bag	For mounting hangers, drop outlet and expansion connector to building. 5/16" Hex, #2 Robertson and slot drive, plated.	
	K40 Dripedge	Use where shingles do not extend over gutter or where shingles are damaged. 6'6" (2 m) lengths. <i>Do not cement.</i>	